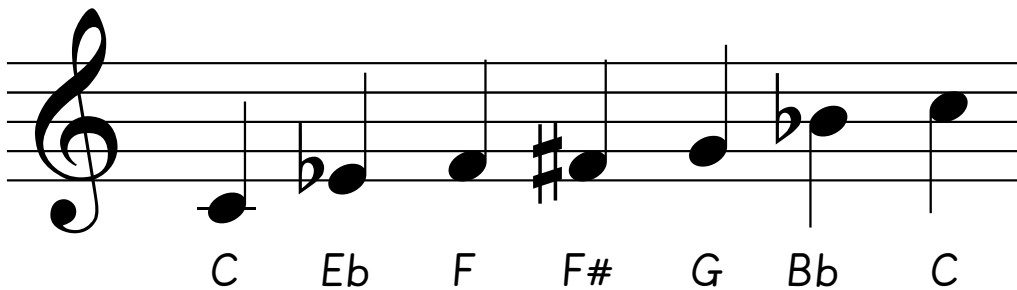




Blues music is often sad and emotional, which is why we say we have 'the blues' when we feel sad. Its main features are the 12-bar blues and the blues scale, and it includes a lot of improvisation.

The Blues scale

The Blues scale to accompany our 12-bar Blues is made up of these notes:



Vocabulary

12-bar blues A series of chords played in a specific order.

1 CCCC	2 CCCC	3 CCCC	4 CCCC
5 FFFF	6 FFFF	7 CCCC	8 CCCC
9 GGGG	10 FFFF	11 CCCC	12 CCCC

chord	Two or more notes that are played at the same time and work in harmony.
scale	Any set of musical notes which are in order of their pitch.
ascending scale	A scale in which the pitch of the notes goes up.
descending scale	A scale in which the pitch of the notes goes down.
blues scale	A set of notes used to play a melody over a 12-bar blues.
improvisation	Making up music as it is played or performed.
bent notes	A musical note that varies in pitch usually going up slightly at the end.
bar	A section of music with a specific number of beats (in blues there are usually 4 beats in a bar).
quaver	A note which last for half a beat.